

SEATECH

Your Experience Integrator



SEABOX

CX Automation

CRM
Smart Ticketing
•AI powered Auto Response
•Dynamic Dashboards
•Insights-Content Analytics
KnowledgeBase
Sales & Lead Management
Ticket Routing
Email-Chat Translation
Survey

AI & Analytics

Speech Analytics
Text Analytics
Chat-Voice Bot
Agent Assist

Contact Center

Cloud CC
Omnichannel
TTS-STT
Self Service
Social Media Messaging

EX & HR Automation

Onboarding
Collaboration
Performance Management
Audit
Knowledge Base
Attendance & Time Tracking
Leave Management
WFM
Learning & Quiz
People Analytics
Your Voice



SEATECH

Your Experience Integrator

SEABOX

Customer & Employee Experience Platform



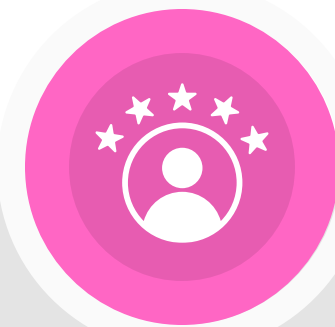
Unify customer communications across all channels with Seabox OmniChannel. One platform, complete visibility



Automate 50% of your support workload and deliver instant resolutions with AI-powered Seabox Smart Ticketing.



Seabox Agent Assist: Empower your Agents with Real-Time Suggestions



Boost CX and cut costs with our smart, scalable solutions



Unlock AI-driven actionable insights with Seabox Ticket Analytics.



Empower Your Team: Onboard, Collaborate, Evaluate, Evolve.

To discover more



www.seatechglobal.com

The S-Team

SEATECH

15

Business Development &
Account Management

20

IT & Software
Development

5

CX & Process
Management

Industries



Insurance



E-commerce



Retail



Automotive



BPO's &
Contact Centers



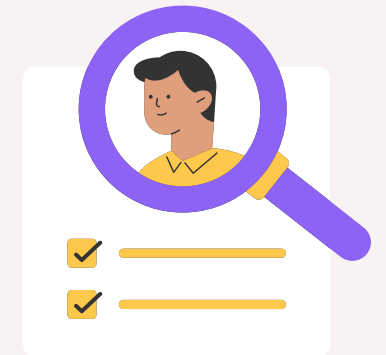
Logistics



CX &
Operations



IT



HR



Underwriting



Planning



Audit

SEATECH

Departments

Our CX Solutions



**AI Driven Omnichannel
Customer Support Platform**



ChatBot



CRM



**Digital
Onboarding**



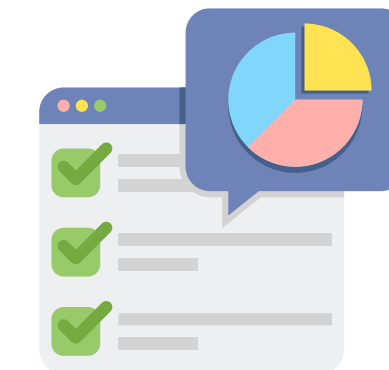
**Automated Ticket
Management**



**Cloud Contact
Center Platform**

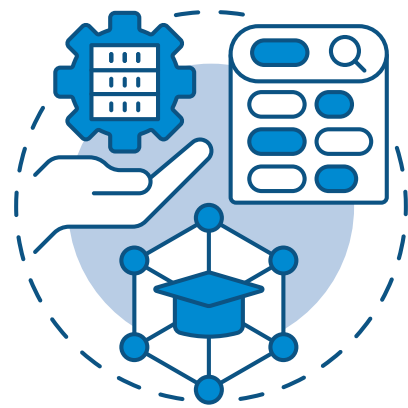


**Speech & Text
Analytics**



**Survey
Management**

Our EX Solutions



**Smart
Knowledge Base**



**Agent
Assist**



**Online
Training**



**Agent
Onboarding**



WFM



**Quality &
Audit**



**Team Chat &
Video Chat**



Digital HR

Our Customers

INSURANCE

AKSigorta

ANADOLU
SİGORTA

Allianz

HDI
SİGORTA

Magdeburger
Sigorta

BORUSAN
LOJİSTİK

bukoli

Integrated
Service
Solutions

kolay
gelsin

OREGON

NEOVA
SİGORTA

QUICK
SİGORTA

Allianz Partners

Allianz
Hayat ve Emeklilik

CORPUS
SİGORTA

RETAIL

CONVERSE

watsons

GANT

LACOSTE

BURBERRY

eren
PERAKENDE

NAUTICA

occasion

SuperStep

THE KOOPLES
PARIS

ENVIRON

ROSSMANN

CUSTOMER SERVICE

ENERJİ
BOĞAZIÇI ELEKTRİK

MEPAŞ

gts
Global
Travel
Services

Borusan Otomotiv

VESTEL

SAMSUNG

YVES ROCHER

sodexo

Domino's

BELTUR TAB

TOROSGAZ

UDAS

UTATIL.COM

RENAULT

KoçSistem
GELECEĞİ KEŞFET

getir

KVKK
KİŞİSEL VERİLERİ KORUMA KURUMU

pepsi

SBARRO

POPEYES

BURGER
KING

MEPAŞ

TUV
TÜRK

EXXEN

SIXT

enterprise

hepsiburada

Vaillant

BAHCIVAN

PINAR

SUBWAY

Arby's



USTA DÖNERGİ

BUSINESS PARTNERS

concentrix

Teleperformance
each interaction matters

Konecta

CHAMPS

TEPE
ÇAĞIRIMERKEZİ

PUSULA
CALL CENTER

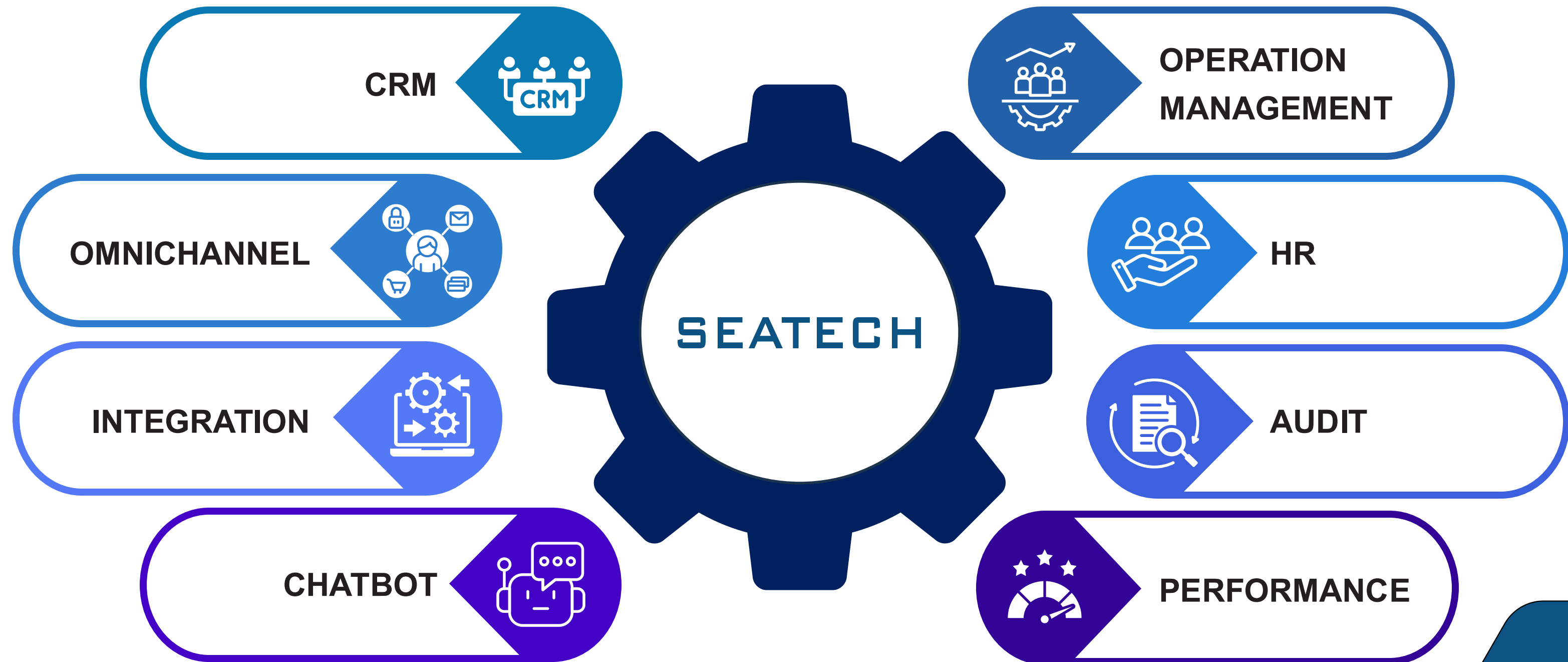
pozitif
kurumsal

bcc

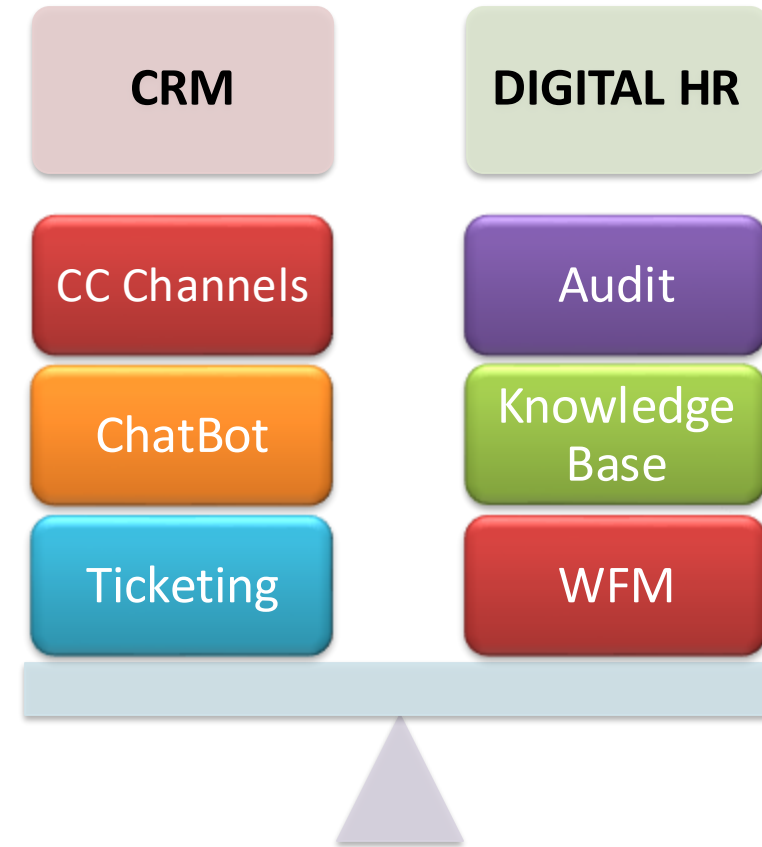
PASİFİK
TEKNOLOJİ

SEATECH

How We Work?



Why Seatech?



Easy to Buy



Easy to Customize



Easy to Integrate

SEATECH

SEATECH

Your Experience Integrator



+48 575 366 267



info@seatech.com.tr



www.seatechglobal.com



linkedin.com/company/seatech

LET'S
TALK
BUSINESS